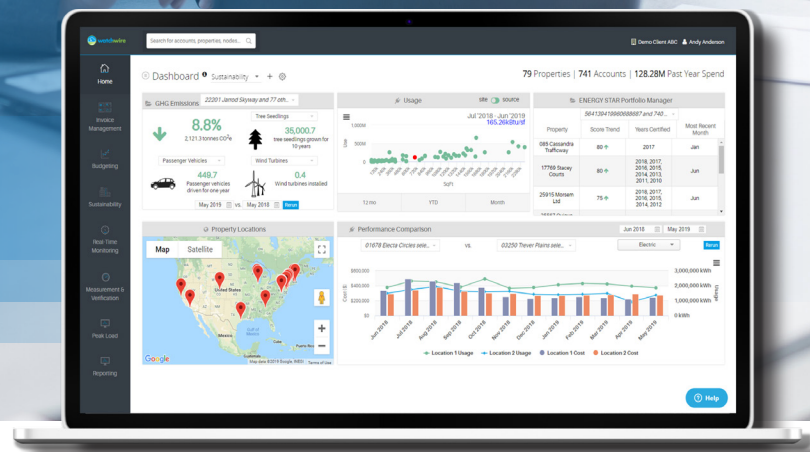


## UTILITY DATA ESP FEATURES



**A Deeper Level of Analytics for Today's Energy Management Requirements**

# Utility Data ESP Features

## OVERVIEW

**The Issue:** Buildings in the United State spend >\$450 billion annually on energy and represent 40% of national energy consumption and emissions

**The Solution:** Utility Data ESP makes energy data management and monitoring easier by offering your team a deeper level of energy analytics for today's requirements.

**The Benefit:** Utility Data ESP solves issues such as high administrative costs that come with manual reporting, siloed data between numerous service providers, difficulty identifying ROI of efficiency projects, sustainability reporting requirements, and more...

- Energy management software users have reported median energy savings of 17% annually
- 91% of the same users stated they couldn't have achieved this performance without the use of their energy management software

## HIGHLIGHTS

- Full suite of easy-to-read analytics to optimize usage efficiency
- Forecasted Energy Budgets
- Create customizable reports and download data to excel
- Peak load notification to reduce energy spend
- Automated Bill Auditing
- Sustainability reporting features





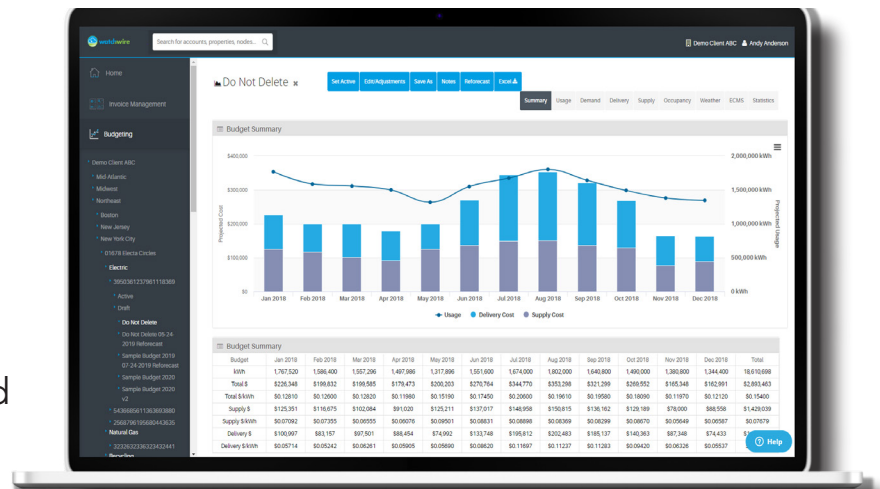
# Utility Data ESP Features

## UTILITY BUDGETING

Budget accurately based on proprietary consumption, forecasting algorithm, supply market predictions, delivery tariff rates, and Public Service Commission rate cases

Understand the impact of lease activity, occupancy, weather, and efficiency projects

Allocate capital efficiently with comprehensive budget variance reporting

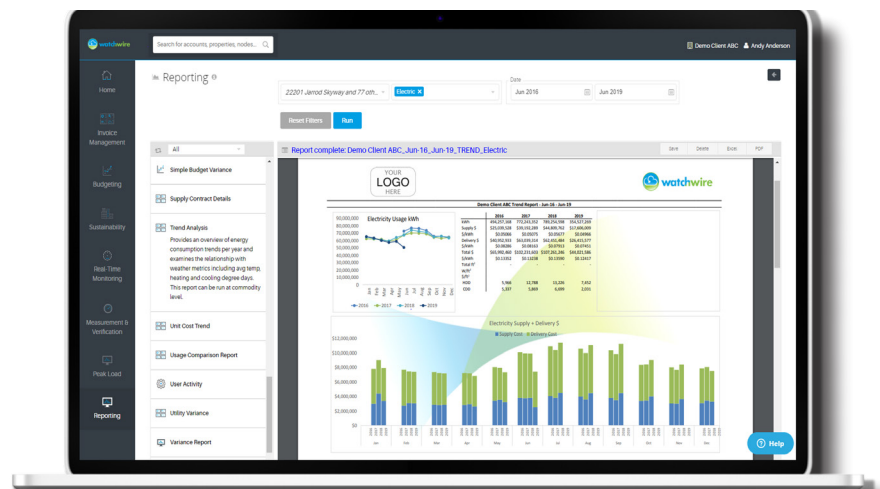


## REPORTING

Automated monthly reporting distribution

Reports native to Excel — formatting never altered upon export

Library of out-of-the-box reports with customized report development available





# Utility Data ESP Features

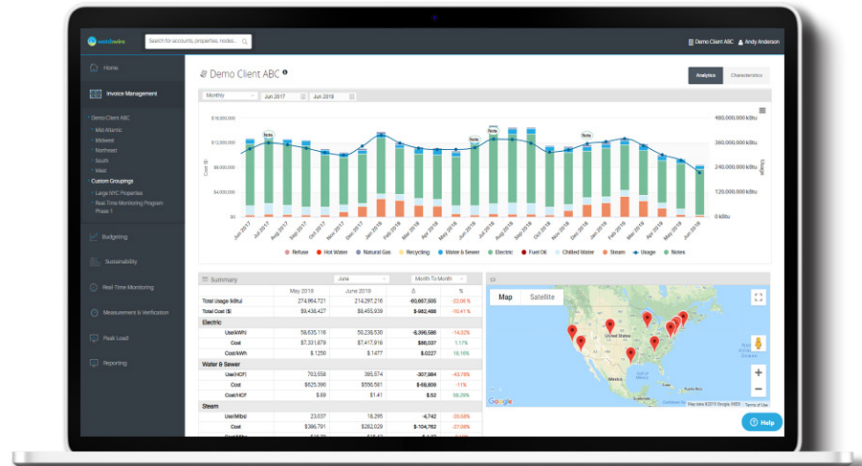
## AUTOMATED UTILITY BILL MANAGEMENT

Utility bill management with building/facility region or portfolio consolidation

Store utility bill images, all line item data, and facility data and documents

Auditing capabilities

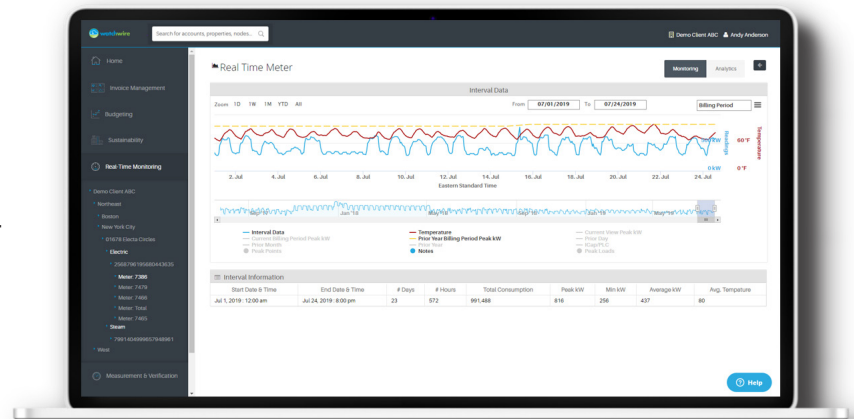
Multiple currency tracking and unit conversions



## REAL-TIME MONITORING

Fully leverage real-time data by analyzing it alongside actual utility bill data

Multiple visualizations giving the ability to identify energy efficiency and savings opportunities



# Utility Data ESP Features

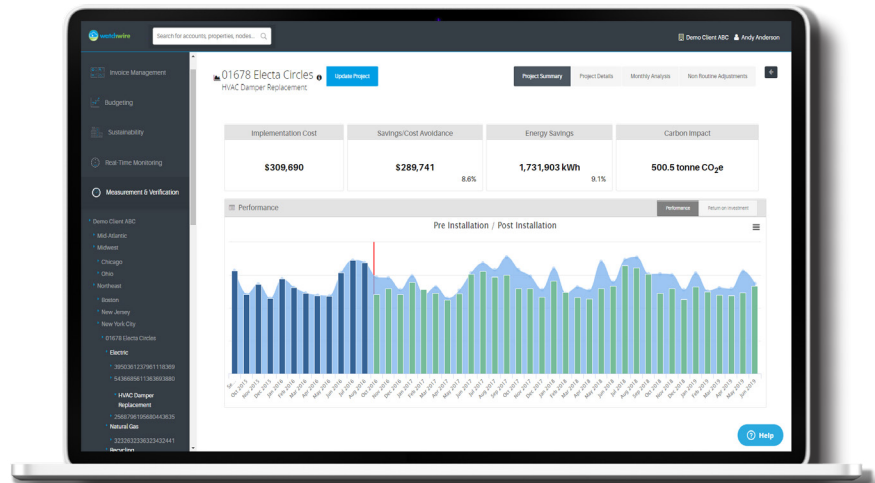
## MEASUREMENT & VERIFICATION

ASHRAE Guideline 14-2014 &  
IPMVP Compliant Option  
B & C

Track multiple ECMs at once

Normalize project analyses for  
weather, billing period length,  
occupancy, & more

Verify performance and track ROI



## PEAK LOAD NOTIFICATION

Predictive analytics alert you  
when peak load hours are likely  
to occur

Track, measure, and verify the  
performance of your peak load  
management efforts

